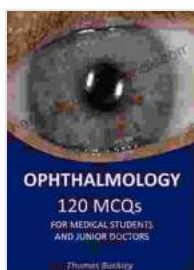


Ophthalmology for Medical Students and Junior Doctors: A Comprehensive Guide

Ophthalmology is the branch of medicine that deals with the diagnosis and treatment of disorders of the eye. Medical students and junior doctors often have a limited exposure to this specialty, but it is an important area of medicine with a wide range of conditions that can be encountered in everyday practice. This article provides a comprehensive guide to ophthalmology for medical students and junior doctors, covering the basics of eye anatomy and physiology, common eye conditions, and their management.

Eye Anatomy and Physiology

The eye is a complex organ with a wide range of structures and functions. The main components of the eye include:



Ophthalmology for Medical Students and Junior

Doctors: 120 Multiple Choice Questions by Colin Stanley

★★★★★ 5 out of 5

Language : English
File size : 11575 KB
Text-to-Speech : Enabled
Enhanced typesetting : Enabled
Print length : 187 pages
Lending : Enabled
Screen Reader : Supported



* The cornea is the clear, front part of the eye that covers the pupil and iris. It helps to focus light on the retina. * The iris is the colored part of the eye that controls the size of the pupil. * The pupil is the black hole in the center of the iris that allows light to enter the eye. * The lens is a clear, flexible structure located behind the iris that helps to focus light on the retina. * The retina is the light-sensitive tissue at the back of the eye that converts light into electrical signals that are sent to the brain. * The optic nerve is a bundle of nerve fibers that carries electrical signals from the retina to the brain.

Common Eye Conditions

There are a wide range of eye conditions that can affect people of all ages. Some of the most common eye conditions include:

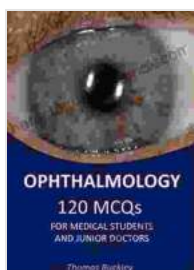
* Cataracts are a clouding of the lens that can lead to blurred vision, glare, and difficulty seeing in low light. * Glaucoma is a condition that damages the optic nerve and can lead to vision loss. * Macular degeneration is a condition that affects the macula, the central part of the retina, and can lead to vision loss. * Diabetic retinopathy is a condition that affects the blood vessels in the retina and can lead to vision loss. * Corneal ulcers are sores on the cornea that can be caused by bacteria, fungi, or viruses. * Conjunctivitis is an inflammation of the conjunctiva, the clear membrane that covers the white part of the eye and lines the inside of the eyelid.

Management of Eye Conditions

The management of eye conditions depends on the specific condition and its severity. Some eye conditions, such as cataracts and glaucoma, can be treated with surgery. Other eye conditions, such as macular degeneration

and diabetic retinopathy, can be managed with medication or lifestyle changes.

Ophthalmology is a complex and challenging field of medicine, but it is also a rewarding one. By understanding the basics of eye anatomy and physiology, and by being familiar with the common eye conditions that can be encountered in everyday practice, medical students and junior doctors can provide their patients with the best possible care.

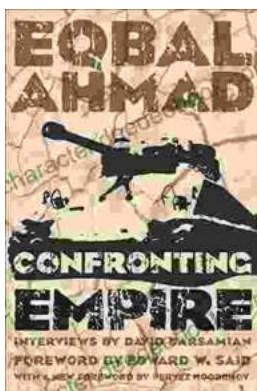


Ophthalmology for Medical Students and Junior

Doctors: 120 Multiple Choice Questions by Colin Stanley

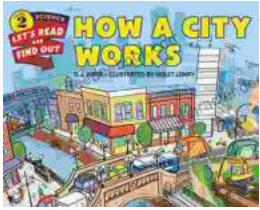
★★★★★ 5 out of 5

Language : English
File size : 11575 KB
Text-to-Speech : Enabled
Enhanced typesetting : Enabled
Print length : 187 pages
Lending : Enabled
Screen Reader : Supported



Confronting Empire: Eqbal Ahmad's Vision for Liberation, Decolonization, and Global Justice

Eqbal Ahmad (1933-1999) was a renowned Pakistani intellectual, activist, and scholar whose writings and activism continue to...



How Do Cities Work? Let's Read and Find Out!

Cities are complex and fascinating places. They're home to millions of people and are constantly changing and evolving. But how do cities actually...